

Hickory Hills Park District Fall 2024 Program Guide

PRESCHOOL



PIZZA TASTING



PIZZA TASTING BUFFET

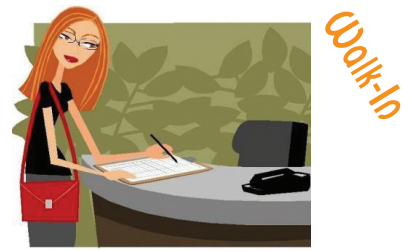
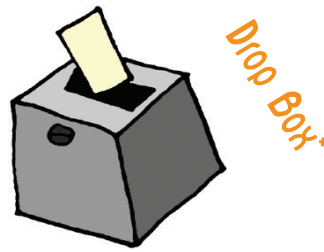
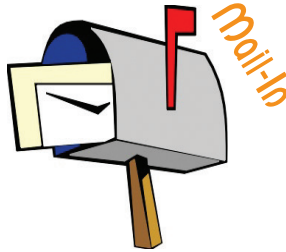
HALLOWEEN EGG HUNT



NEW DOUG OSBORNE PARK

Registration Information

3 Ways To Register!



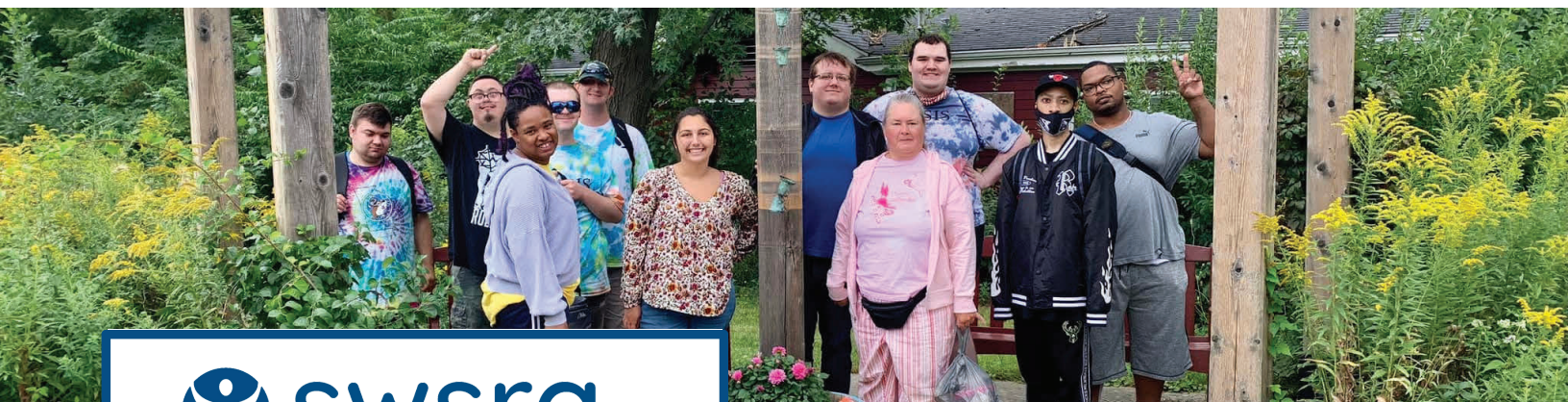
Resident Registration Begins Monday, August 19
Non-Resident Registration Begins Monday, August 26

Hickory Hills Park District
8047 W. 91st Place or 9100 S. 88th Avenue
Hickory Hills, IL 60457

*Place form and check in a sealed envelope and drop in the drop box located to the left of the front doors at the Cynthia Neal Center, 8047 W. 91st Pl. Available 24 hours a day.

Registration accepted until program/trip is filled. Refunds for special events and trips will be issued only if the program is cancelled by the Park District. (See page 23 for more information)

Please register as early as possible to avoid cancellations.



WHO WE ARE:

South West Special Recreation Association (SWSRA) was formed in 1981 to provide year-round quality therapeutic recreation programs and services for individuals with intellectual and/or physical disabilities or special needs. SWSRA programs are designed to increase independence and enhance the quality of life for each individual. SWSRA offers a variety of programming for ages youth to adult.

WHO WE SERVE

- Alsip Park District
- Blue Island Park District
- Hickory Hills Park District
- Village of Merrionette Park
- Midlothian Park District
- Palos Heights Parks & Recreation Department
- Posen Park District
- Worth Park District

AREAS OF SERVICE:

- Weekly Programs (in-person & virtual)
- Special Events
- Adult Day Program
- Special Olympics
- Cooperative Programs
- Inclusion Services
- Special Olympics

Follow us on...



"Building Community through Recreation"

12521 S. Kostner Ave.
Alsip, IL 60803
708-389-9423
visit us at www.swsra.org

ADMINISTRATIVE OFFICE

Cynthia Neal Administration &

Recreation Center

8047 W. 91st Place
Hickory Hills, IL 60457
(708) 598-1233

Krueger Park Recreation Center

9100 S. 88th Avenue
Hickory Hills, IL 60457
(708) 599-7337

OFFICE HOURS

Monday – Friday, 9 a.m. – 5 p.m.

WEB SITE

www.hhparkdistrict.org



PUBLIC BOARD MEETINGS

**3RD Monday of the Month at
the Cynthia Neal Center.
8047 W. 91st Place
at 7:00 p.m.**

Brochure can be available in an alternative format within 48-hours.

For the Hearing Impaired

T.D.D. Users call 800-526-0844. Able to use your own voice? Call 800-526-0857

BOARD OF COMMISSIONERS

A special thanks to the Commissioners who serve without any compensation.

Joshua Czarny
(2023 • 2025)

Patrick Kosnick
(1991 • 2025)

Sandra Morgan
(1990 • 2025)

Robert Peterson
(2015 • 2027)

Stephan Zalas
(2019 • 2027)

PARKS & RECREATION STAFF

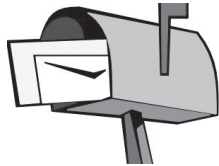
Jennifer Fullerton..... Executive Director

Zachary Ingalls.....Maintenance Manager

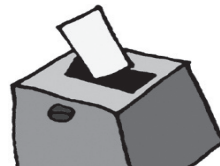
Angel Sanchez.....Recreation Manager

Tammy Muth.....Business Manager

3 Ways To Register!



Mail-In



Drop Box*



Walk-In

The following representatives may be contacted for information about their organizations

[Hickory Willow Swim Association](#)

Call: Tom Rieman 312-301-1870

[Hickory Hills Youth Baseball](#)

Call: George Czarnik 312-919-0295

Family Member Rate Policy

An immediate family member is defined as a married/spouse and/or child(ren) that are 24-years or younger and living in the same household.

Tennis Court Rules

- Hours: 9 a.m. until 10 p.m.
- Smooth soled shoes only.
- Park sponsored programs have priority.
- No bikes, skateboards, scooters, or roller blades allowed on courts.
- No food or drinks in court area.
- When others are waiting, please limit play to one hour.

Basketball Court Rules

- No alcoholic beverages.
- No bikes, skateboards, scooters, or roller blades allowed on courts.
- No profanity.
- Hanging on rims or dunking is prohibited.
- Loud music is prohibited.
- Do not relieve yourself on grounds.
- Be courteous when others are waiting.
- Court closes at dusk.
- Violations of these rules may result in the closing of the courts.

**REFUNDS FOR SPECIAL EVENTS, ONE DAY PROGRAM/
EVENTS, AND TRIPS WILL BE ISSUED ONLY IF IT IS
CANCELLED BY THE PARK DISTRICT.**

Special Recreation

Through a cooperative agreement between the Hickory Hills Park District and the South West Special Rec (SWSRA), children and adults who have a disability, handicap, or special needs, have the opportunity to participate in the special recreation program through the SWSRA. For more information, call the SWSRA Office at 708-389-9423. Pick up a brochure at the Cynthia Neal Center, Krueger Park, or visit SWSRA.org.

Brochure Distribution

The Hickory Hills Park District relies on the Bridgeview Post Office for mail delivery of our seasonal brochures. The Park District assumes no responsibility for mail delivery. If for some reason you do not receive a brochure, we encourage you to pick up a brochure at the Cynthia Neal Center or Krueger Park Recreation Center. A digital version of the brochure is available online at hhparkdistrict.org.

Rentals

The Hickory Hills Park District has limited activity rooms and field rentals available. A permit is necessary for any use of 7 or more people using our fields outdoors. Rentals are available at the Krueger Park picnic area and athletic fields for their corresponding sports.

For more information, including pricing and availability, call 708-598-1233.

SPECIAL EVENTS

Pizza Tasting Buffet 205256-01

"That's amore!" Bring out the whole family for a taste of pizza from top pizza joints in the area. We will have a variety of crusts, deep dish, and stuffed pizzas to choose from. Beverages (water, coffee, soda) will be available. **NOTE: A free raffle will be available for a chance to win pizza gift certificates. Children under 5 years of age are FREE. NO REFUNDS OR CREDITS. Registration will not be accepted at the door. Deadline is 5:00 p.m. on Wednesday, September 11.**

Day & Date: Friday, September 13
Time: 6:00 p.m. - 7:30 p.m.
Ages: All Ages (Under 14 yrs must be accompanied by an adult)
Location: Krueger Park Gym
Min/Max: 40/50
Fee: \$11 Resident (13 & up)
 \$8 Resident (5 - 12)
 \$13 Non-Resident (13 & up)
 \$10 Non-Resident (5 - 12)

Monster Mashup 221201-01

Join us for a Monster Mashup Party! Get ready for a day of spooky fun with games, contests, and dancing. Dress up as your favorite monster or character and win prizes for "best dressed", "best dancers", "spookiest costume", and more! Participants will also get to enjoy open gym time while having fun dancing to music from our DJ. Pizza, pictures, and a D.J. will be included. Prepare to have some spooktacular fun! **NOTE: Parents wanting to chaperone please contact 708-599-7337.**

Day & Date: Friday, October 25th
Time: 6:00 p.m. - 8:00 p.m.
Ages: 5 - 12 years
Location: Krueger Park Gym
Min/Max: 30/60
Fee: \$18 Resident, \$20 Non Resident

Sensational Soup & Paninis 205203-01

Stay warm and try a variety of soups offered from **Xando's** famous soup and a portion size of each kind of paninis. Crackers/bread, soda, & water will be provided. A free gift card raffle will follow dinner. **NOTE: Children 5 years and under are free.**

Day & Date: Thursday, September 26
Time: 4:30 p.m. - 6:00 p.m.
Ages: All Ages (under 16 must be accompanied by an adult)
Location: Krueger Park Activity Room A & B
Min/Max: 32/50
Fee: \$13 Resident (13 & up)
 \$11 Resident (12 & under)
 \$15 Non-Resident (13 & up)
 \$13 Non-Resident (12 & under)

Taste of the Hickory Hills 206260-01

Join us for our annual food tasting of local restaurants in Hickory Hills, Palos Hills, and other local establishments. Bring your taste buds for some food samplings that will be sure to satisfy your appetite. We will provide you with a variety of food portions for you to taste and enjoy. We will also include some dessert tasting to sweeten the evening. **NOTE: Evening includes tasting portions, refreshments, and dessert. Must register by Friday, October 25th.**

Day & Date: Friday, November 1
Time: 6:00 p.m. - 7:30 p.m.
Ages: All ages (Under 14 yrs must be accompanied by adult)
Location: Krueger Park Gym
Min/Max: 40/80
Fee: \$11 Resident (13 yrs & up)
 \$8 Resident (5 - 12yrs)
 \$13 Non-Resident (13yrs & up)
 \$10 Non-Resident (5 - 12yrs)

Grand Bingo 355375-01

Enjoy a special Bingo event where everyone is guaranteed a prize. Come for a chance to win fabulous prizes including our Grand Prize. Sit & enjoy the company of your friends and we'll do the rest. **NOTE: Every player receives multiple cards. Fee includes prizes, snacks, dessert, refreshments, and lunch.**

Day & Date: Saturday, December 7
Time: 1:00 p.m.- 4:00 p.m.
Ages: 21 years & up
Location: Krueger Park Activity Rooms A & B
Min/Max: 30/50
Fee: \$24 Resident, \$26 Non Resident

SPECIAL EVENTS

3

House Decorating Contest

205232-01

We are bringing back an old favorite to see who has the best decorated Halloween House in Hickory Hills. All you need to do is register with the park office by October 25 at (708) 598-1233 to enter the contest. On the evening of **Tuesday, October 29**, the judges will view all entries between **6:15 PM** and **7:45 PM**. Judging will be based on originality, lighting, arrangements and use of props. The contest is **FREE** and open to all Hickory Hills residents. Winners will be notified on Thursday, October 31 and prizes will be awarded at the November Board Meeting. **All decisions are final. Previous first place winners (2022 + 2023) are not eligible to enter this year. You do not have to be present to receive your award.**



Sponsored by:

Fasano's Pizza

8351 Roberts Road - Justice, IL
(708)598-6971



Fasano's Hours:

Wed., Thurs., Sun. 11 a.m. - 10 p.m.
Fri. & Sat. 11 a.m. - 11 p.m.
Mon. & Tues. - Closed



Prizes:

First Place: \$100 Gift Card
Second Place: \$50 gift certificate
Third Place: \$25 gift certificate



Halloween Egg Hunt & Costume Parade

206291-01

Join us for the Halloween Egg Hunt and Costume Parade where participants will come dressed to participate in the costume parade and win the best dressed prize. We will then have participants ready to collect as many eggs as they can in our field filled with various treats and prizes.

Day & Date: Saturday, October 26

Time: 10:30 a.m. - 11:30 a.m.

Ages: 2 - 13 years

Location: Krueger Park Soccer Field

Min/Max: 20/50

Fee: \$10 Resident, \$12 Non Resident



Pumpkin Decorating Contest

205202-01

Take home a pumpkin to decorate and compete in the most creative pumpkin contest. This festive event invites participants of all ages to showcase artistic talents by transforming pumpkins into unique and imaginative masterpieces. Whether you prefer carving, painting, or accessorizing, this contest is a fun way to celebrate the autumn season and get into the Halloween spirit.

NOTE: All pumpkins can be picked up on October 21st - 25th, Monday-Friday, 9:00 a.m.- 5:00 p.m. and must be returned for judging on October 28th. Participants do not need to be present during judging and a winner will be notified by November 6th. A Fall basket prize will be waiting for the winner.

Pumpkin pick up: October 21st - 25th

Pumpkin drop off: October 28

Location/Pick-Up: Krueger Park Recreation Center

Min/Max: 10/25

Fee: \$10 Resident, \$12 Non-Resident



Garage Sale/Craft & Vendor Show

205229-01

Do you have a special skill/craft, or just items you want to get rid of before the holidays? Halloween, Thanksgiving & Christmas are right around the corner. A 6 foot table in a 10 X 8 foot space will be provided for each registered seller. Each participant must provide their own cash box for change and are responsible for thoroughly clearing their assigned space after the sale. The park district will advertise this event. **NOTE: To prevent a conflict of interest, provide your craft or vendor type when you register. Deadline for registration is 5:00 p.m. Friday, October 11.**

Day: Saturday

Date: October 19

Time: 8:00 a.m. - 1:00 p.m.

Ages: All Ages (Under 16 must be accompanied by an adult)

Location: Krueger Park Gym

Min/Max: 15/20

Fee: \$23 Resident, \$28 Non-Resident

\$5 Additional table in your space

4 PRESCHOOL 2024 - 2025

We have designed a balanced preschool program ready to meet the educational, social, emotional, motor, and creative needs of children 3 to 5 years. Preschool children will be introduced to letters, numbers, colors, shapes, and other basic concepts. Pre-Kindergarten children will be introduced to phonics, pre-writing skills, fine motor skills, reading readiness, and number concepts. Story-time, music activities, and seasonal art projects will be included in the program. **Children must be 3 years old by September 1, 2024. All children must be able to take care of their own bathroom needs.**

Registration Information

Registration is accepted at the Cynthia Neal Center, 8047 W. 91st Place. The office is open Monday thru Friday, 9:00 a.m. - 5:00 p.m.

You must bring your child's birth certificate and immunization records with you at the time of registration. A note from your doctor stating that your child is up-to-date on his/her shots is also acceptable. There is a \$100 non-refundable/non-transferable deposit required when you register. *Non-residents must add \$15 to this fee. The \$15 non-resident fee is due with the August 1, 2024 payment. The payment plan is suggested. **YOU MUST PAY BY EACH DEADLINE OR A LATE FEE OF \$10.00 WILL BE ADDED TO YOUR PAYMENT.** Of course, you may pay your balance in full at any time.

There is a \$100 non-refundable/non-transferable deposit required when you register. *Non-residents must add \$15 to this fee. The \$15 non-resident fee is due with the August 1, 2024 payment. The payment plan is suggested. **YOU MUST PAY BY EACH DEADLINE OR A LATE FEE OF \$10.00 WILL BE ADDED TO YOUR PAYMENT.** Of course, you may pay your balance in full at any time.

Preschool Tuition & Payment Schedule for Full School Year

Class times are 8:45 a.m. to 11:45 a.m. or 12:15 p.m. to 3:15 p.m.
M-F (5 days), M/W/F (3 days), or T/TH (2 days).

Full Year Option - 716715	M - F	M/W/F	T/TH
Deposit due at time of registration	\$100.00	\$100.00	\$100.00
Amount due by August 1, 2024	\$660.00*	\$362.00*	\$284.00*
Amount due by September 3, 2024	\$660.00	\$362.00	\$284.00
Amount due by October 1, 2024	\$660.00	\$360.00	\$282.00
TOTAL FEE FOR SCHOOL YEAR:	\$2080.00	\$1184.00	\$950.00

Half Year Option - 716714 - Now you are able to register for only half a year at a time. Students who are enrolled in the January - May option will be included in the farewell program at the end of the year.

Half Year Option September-December	M - F	M/W/F	T/TH
Fees due at time of registration	\$1091R/\$1133NR	\$655R/\$665NR	\$527R/\$537NR
Half Year Option January-May	M - F	M/W/F	T/TH
Fees due at time of registration	\$1118R/\$1128NR	\$655R/\$665NR	\$558R/\$568NR

Lunch Bunch

For the children enrolled in our preschool program, we are offering a Lunch Bunch class extension. Lunch bunch is ideal for preschoolers who are ready to extend their day either before or after school, and is designed to give your child an opportunity to build on their social learning, develop self help skills, and build relationships with new friends. Each child is required to bring a brown bag lunch - lunch is not provided. **NOTE: Please do not pack any type of peanut or peanut product in your child's lunch. If you are sending your child with a sandwich containing almond butter or like product, please label it clearly so teachers know what it consists of. For more details, call 708-598-1233.**

Time: 11:45 a.m. - 12:15 p.m.

Ages: 3 - 5 Years

Location: Cynthia Neal Center Preschool

Min/Max: 6/10

Month:	2 Day	3 Day	5 Day
Aug.	\$18R/\$23NR	\$22R/\$27NR	\$40R/\$45NR
Sept.	\$36R/\$41NR	\$54R/\$59NR	\$90R/\$95NR
Oct.	\$45R/\$50NR	\$63R/\$68NR	\$108R/\$113NR
Nov.	\$31R/\$36NR	\$45R/\$50NR	\$72R/\$77NR

Kindergarten Kid's Place

Is your child enrolled in half-day preschool or kindergarten, and you need somewhere for them to go the rest of the day? You can sign them up for our before or after care program. Similar to the after school program, this program will only be held on full days of school (District 117). While the children are here they will work on their school work, play a variety of games, make craft projects, or play sports. Parents must contact District 117 for transportation price and arrangements before registering at the Park District. Each child must provide their own lunch. A light snack and refreshments may be served. Any child picked up after 4:25 p.m. will be assessed a late fee (no exceptions). **NOTE: No refunds, credits, or transfers. For more details, call 708-598-1233. No after care on school scheduled days off. On team days, hours will be extended to accommodate you.**

Rates are per a week

Before Care: 8:45 a.m. - 12:30 p.m. (716711)

Fee: \$85 Resident, \$90 Non-Resident

After Care: 11:30 a.m. - 4:15 p.m. (716712)

Fee: \$106 Resident, \$111 Non-Resident

Location: Cynthia Neal Center Preschool Room

BEFORE/AFTER SCHOOL 5

Morning School Program (September - December 2024)

This program will be held before school begins for parents who have their children enrolled in School District 117. Staff will help participants prepare for school each day. Students who attend Glen Oaks Elementary School will be escorted to school by a Park Supervisor each morning. Students who are transported to school via a school bus must make transportation arrangements with the school district before enrolling your child. This program will only be held on full and half days of school (District 117). **NOTE: No refunds or credits on monthly fees (including for medical reasons). All participants must sign up for the entire month. No exceptions.**

Day:	Monday - Friday	Fee:	\$220 (September - 20 Days)	711715-02
Time:	7:00 a.m. - 8:45 a.m.		\$242 (October - 22 Days)	711715-03
Location:	Krueger Park Activity Room A & B		\$154 (November - 14 Days)	711715-04
Ages:	Grades 1st - 5th		\$165 (December - 15 Days)	711715-05
Min/Max:	8/30			

After School Club 2024 "A Power Play! Beyond School Program" (September - December 2024)

Come to Krueger Park and have a blast! This program is held after school for children that may need to go somewhere when school is over with. This program will only be held on full days of school (District 117). While the children are here they will work on their school work, play a variety of games, make craft projects, play sports, or even go outside to play. The students that attend Glen Oaks Elementary School will meet at the school with a Park Supervisor and will be walked over to Krueger Park at 2:45 p.m. then again after their Extended Day Program at 4:00 p.m. each day. The students from Dorn, Sorrick, Oak Ridge, and Conrady will be transported to Krueger Park. There is no charge if they are on the bus program. However if they are not, additional fees may apply if they wish to get transported by bus to Krueger Park. Students who are transported to school via a school bus must make transportation arrangements with the school district before enrolling your child. Each day snacks will be provided by the park. **No refunds or credits including for medical reasons. A transfer to a different day may only occur with a one week notice and must be approved by the Recreation Manager. New students need to be registered one week in advance (school transportation and park registration). Last minute changes cannot be made for students using school transportation. DAYS OFF: No After School Program on school scheduled days off. TEAM DAYS: On Team Days the After School Program will start at 1:45 p.m.**

Time: 3:00 p.m. - 6:00 p.m.
Location: Krueger Park Gym & Activity Room C
Fee: Glen Oaks - 711711; Dorn - 711712;
 Oak Ridge - 711713; Sorrick - 711714;
 Conrady - 711716 -- \$17.00/day
 Same day registration will not be taken.



A HEALTHY PLATE
MADE TO ORDER

www.4KIDSplate.com

Toll Free: 1-877-783-KIDS

IAPD

NOTE: Late fees will be assessed for all programs if child is not picked up within 10 minutes of end time. See *General Information (Child Pick-up Policy)* for more information.

Mini School

Is your child ready for a little taste of preschool, but not quite ready to go the full 3 hours? Then Mini-School is the program for them! This program will introduce your child to the preschool environment in a shortened class time. Held in our preschool classroom with one of our preschool teachers, your child will experience a school setting, stories, songs, craft projects and fun with peers all in a smaller amount of time. **NOTE: No Class November 11. If you want, you can register for one day or all days.**

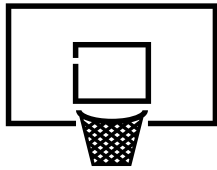
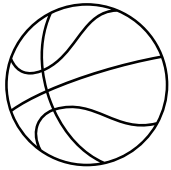
Day/Dates:	Mon., Sept. 9- Oct. 7	716713-01	Mon., Oct. 21 - Nov. 25	716713-06
	Tue., Sept. 10 - Oct. 8	716713-02	Tue., Oct. 22 - Nov. 19	716713-07
	Wed., Sept. 11 - Oct. 9	716713-03	Wed., Oct. 23 - Nov. 20	716713-08
	Thurs., Sept. 12 - Oct. 10	716713-04	Thur., Oct. 24 - Nov. 21	716713-09
	Fri., Sept. 13 - Oct. 11	716713-05	Fri., Oct. 25 - Nov. 22	716713-10
Time:	12:30 p.m. - 1:30 p.m.		Min/Max:	6/10
Ages:	2 - 4 Years		Fee:	\$50 Resident, \$55 Non-Resident
			Location:	Cynthia Neal Center Preschool

6 EARLY CHILDHOOD & YOUTH

Korner Kickers - Outdoor 211225-01

This mini league will teach the young soccer stars the basics of the game. Kids will learn basic techniques and get familiar with the game and how it is played. This will be a 6 vs. 6 competition (5 players & a goalie). Each team will consist of 8 players. **NOTE: All players will receive a t-shirt. Parents interested in coaching should contact the Recreation Manager at 708-599-7337.**

Dates: September 9 - October 7
Day: Monday
Time: 5:30 p.m. - 6:30 p.m.
Ages: 4-6 years
Location: Krueger Park Soccer Field
Min/Max: 18/26
Fee: \$48 Resident, \$53 Non-Resident



Little Dribblers 221221-01

Even future stars have to learn the basics of dribbling, passing, shooting and rebounding. Players train in the game of basketball by participating in technical drills and exciting game competitions. Basket will be lowered for these all-stars. **NOTE: Fee includes a t-shirt.**

Dates: October 9 - November 20
Day: Wednesday
Time: 4:15 p.m. - 5:00 p.m.
Age: 4-7 years
Location: Krueger Park Gym
Min/Max: 8/12
Fee: \$52 Resident, \$57 Non-Resident

Messy Play Adventures 216201-01

Explore our Sensory Adventures, where kids dive into colors, textures, and play! From finger painting to molding play dough, it's a creative journey for fine motor skills. Join the fun and watch imaginations go free!

Dates: September 24 - October 22
Day: Tuesday
Time: 10:30 a.m. - 11:15 a.m.
Ages: 2½ - 5 years
Location: Krueger Park Activity Room C
Min/Max: 6/10
Fee: \$35 Resident, \$40 Non-Resident

Mini Gymnastics

Watch your kid go from cartwheels to confidence with lots of giggles along the way. Children get introduced to gymnastic equipment and gym rules. They learn basic gymnastic skills that work on strength building, gross motor skills and general coordination. They will practice and develop many gymnastics skills such as rolling in all directions as well as beginner handstands, cartwheels, and pullovers. The goal is for the kids to have fun and explore.

Dates: September 23 - October 21
Day: Monday
Session 1 211249-01
Time: 4:30 p.m. - 5:15 p.m.
Session 2 211249-02
Time: 5:15 p.m. - 6:00 p.m.
Ages: 3 - 6 years
Location: Krueger Park Gym South
Min/Max: 6/10
Fee: \$32 Resident, \$37 Non-Resident

Munchkin Open Gym

Does your toddler need to burn off excess energy? Enjoy some of our tunnels, mats, and mini cart. Watch your child play with other children while developing strength, coordination & agility. **NOTE: Parent or guardian must accompany the child.**

Dates: September 4 - October 9 211202-01
October 23 - November 27 211202-02
Day: Wednesday
Time: 10:30 a.m. - 11:30 a.m.
Ages: 2 - 5 years
Location: Krueger Park Gym
Min/Max: 6/12
Fee: \$26 Resident, \$31 Non-Resident

A Pirate Adventure 216204-01

Aye Matey! Parents and junior pirates explore the travels and tales of being a pirate with a visit from a real live pirate! This adventure features games, a craft and a treasure hunt. Arrrrgh! **NOTE: A snack & juice box will be provided.**

Day & Date: Wednesday, September 18
Time: 10:30 a.m. - 11:45 a.m.
Ages: 3 - 6 years
Pirate: Captain Krueger Hook
Location: Krueger Park Activity Room A
Min/Max: 5/10
Fee: \$11 Resident, \$13 Non-Resident

EARLY CHILDHOOD

7

Junior Tennis Stars 221261-01

Play exciting games and learn how to hit a forehand, backhand, volley, overhead smash and serve. Racquets will be provided. **Class will be held outdoors.**

Dates: September 9 - October 14
Day: Monday
Time: 4:10 p.m. - 5:00 p.m.
Ages: 5 - 7 years
Location: Krueger Park Tennis Courts
Min/Max: 7/10
Fee: \$51 Resident, \$56 Non-Resident

Hit & Run ~ Tennis 221258-01

These group lessons are designed for students who love the game of tennis. Hone your skills on our courts with fellow tennis enthusiasts.

Dates: September 9 - October 14
Day: Monday
Time: 5:00 p.m. - 6:00 p.m.
Ages: 8 - 12 years
Location: Krueger Park Tennis Courts
Min/Max: 7/10
Fee: \$51 Resident, \$56 Non-Resident

Holi-"Day Off" Krew

While you are at work and your kids are off of school enroll them in a program that is sure to keep them busy all day. Children will participate in a variety of activities in our gym and activity room that will sure to keep out of trouble at home. **NOTE: Pack a lunch each day. Afternoon snacks provided. Must register in advance or the program may be cancelled due to low enrollment.**

Day & Date: Monday, Oct. 14	211211-01	Time: 8:00 a.m. - 5:30 p.m.
Monday, Nov. 11	211211-02	Ages: 5 - 12 Years
Monday, Nov. 25	211211-03	Location: Krueger Park Recreation Center
Tuesday, Nov. 26	211211-04	Min/Max: 8/25
Wednesday, Nov. 27	211211-05	Fee: \$43 Resident, \$48 Non-Resident (Daily)

BIRTHDAY PARTY PACKAGES

Birthday Party Packages

206232-01

Planning a birthday party? Let us do the work planning your child's birthday party. All birthday party packages are 2 hours long and available only on Saturdays & Sundays. Call for available days. Our birthday parties can accommodate kids of all ages and interests in an environment that is fun, safe, and truly unique! Various equipment and activities are available to enjoy. From parachutes, tunnels, and hula hoops for the younger kids to soccer balls, basketballs, and footballs for the older kids. We have what you need to make the party fun. **ALL PACKAGES INCLUDE:** Activity room set up of tables & chairs, juice boxes, pizza, gym setup of **MONSTER TRUCK BOUNCE**, sports activities, 2 hours of fun, and a party assistant. There is an additional fee for parties that need additional time.

NOTE: Parents will be responsible for invitations and helping with the cleanup.

A minimum of 2 adults per 10 children is needed to supervise the party with the party planner.

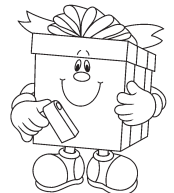
Registration must be done at least two weeks in advance. Full payment is due upon booking including a deposit of \$125, which will be refunded after the birthday party is completed and no issues or damage has been confirmed.

\$125 deposit will be kept if the birthday party is cancelled.



Location: Krueger Park Recreation Center, 9100 S. 88th Ave.

Fees: \$245 Resident (10-13 children); \$290 Resident (14-18 children)
\$255 Non-Resident (10-13 children); \$300 Non-Resident (14-18 children)



8

MUSICAL PROGRAMS

Violin Vibrations

Our Instructor, Barbara Satora, will teach hand positioning, notes, and memorization - just to name a few things. Prior to the first class, the instructor will contact you to discuss lessons times. Sessions last 45 minutes. Note: Fee includes lessons, music books, and theory sheets. Students that need to purchase or rent their instrument must attend an orientation that is set up by the instructor. Call 708-599-7337 to schedule an orientation appointment. Only 1 make up class per session, scheduled the following week after the 1st scheduled class. **NOTE: No classes on November 30 & December 1.**

Dates:	September 7 - October 13 226213-01	Fee:	\$194 Resident, \$199 Non-Resident
	October 26 - December 8 326313-01		\$10 discount per additional family member up to 3
Day:	Saturday or Sunday	Dates:	September 7 - October 13 226213-02
Time:	8:15 a.m. - 4:00 p.m.		October 26 - December 8 326313-02
Ages:	4 years & up	Fee:	\$244 Resident. \$254 Non-Resident
Location:	Krueger Park Activity Room C		2 siblings together for a 1-hour session
Min/Max:	8/16		

Violin Band 226206-01

Experience the fun and thrills of performing with other musicians. Perform popular classical music and holiday songs during this 12-week program.

Dates: September 8 - November 24
Day: Sunday
Time: 12:15 p.m. - 1:15 p.m.
Ages: 5 years & up
Instructor: Barbara Satora
Min/Max: 8/16
Fee: \$72 Resident, \$77 Non-Resident
Location: Krueger Park Activity Room C
\$10 discount for each additional family member up to 3



Private Voice & Piano Lessons

These 30-minute private lessons are designed for beginners and intermediate level learners. Voice lessons will focus on developing voice range, pitch, tone production, breath control, stage presence and more. Piano lessons will learn the fundamentals of note reading, hand positioning, and fingering techniques. All lessons will take place at Palos Music Instruction. Upon registration, please contact the instructor to arrange the lesson time and receive further details for your lessons at 708-974-8002. **NOTE: Books may be purchased from the instructor directly as needed. Students must have a piano or electric keyboard at home for practice purposes. This is an 8 week program (1 lesson per week)**

Dates:	Sept. 9 - Nov. 2 226294-02	Piano	Voice	Day:	Monday - Saturday
	Nov. 4 - Dec. 28 326394-01	206227-02	206227-02	Ages:	5 years & up
		306327-01	306327-01	Min/Max:	2/10
Time:	10:00 a.m. - 8:00 p.m. (30 minute time slot)				
Location:	Palos Music Instruction 10604 S. Roberts Rd.				
				Fee:	\$175 Resident, \$180 Non-Resident
					\$10 discount for each additional family member up to 3.

Private Guitar Lessons - 30 Minutes

These lessons are for beginner to advanced (acoustic or electric guitar). Instructor will structure progressive lessons based on students' individual needs and interest. **NOTE: Each student will be placed in a 30-minute (private lesson) time slot. All students must bring a guitar to class. Call Frank at Palos Music Instruction at 708-974-8002 to set up day & time for lessons. This is a 8-week program (1 lesson per week).**

Dates: Sept. 9 - Nov. 2 236295-02
 Nov. 4 - Dec. 28 336395-01
Day: Monday - Saturday
Time: 10:00 a.m. - 8:00 p.m.
 (30 minute time slot)
Ages: 5 years & up
Location: Palos Music Instruction
 10604 S. Roberts Rd.
Min/Max: 6/10
Fee: \$175 Resident, \$180 Non-Resident
\$10 discount for each additional family member up to 3

YOUTH PROGRAMS

9

Homeschool Gym

Join us for homeschool gym, a dynamic program designed for families to enjoy physical activity in a supportive and social environment. Our program focuses on promoting fitness and teamwork through a variety of fun games and exercises. It offers a great opportunity for children to stay active, make friends, and develop skills.

Dates: Sept. 16 - Oct. 17 221205-01
Oct. 21 - Nov. 21. 221205-02

Day: Monday & Thursday

Time: 10:30 a.m. - 11:30 a.m.

Ages: 6 - 12 years

Location: Krueger Park Gym

Min/Max: 6/12

Fee: \$50 Res., \$55 Non-Res., \$6 Walk-In

Among Us

226209-01

Does your child love the game Among Us? If so we have the program for you! Come join us in a one-day program where we play the game Among Us around the park! We will explain the rules and concepts of the game and then have the kids recreate the game in real life! At the end of the game we will provide pizza and refreshments.

Date: October 2

Day: Wednesday

Time: 6:00 p.m. - 7:30 p.m.

Ages: 8 - 12 years

Location: Krueger Park Gym

Min/Max: 10/20

Fee: \$19 Resident, \$21 Non-Resident

Fallin' into Crafts

226205-01

Come and join us for a class where your child can explore a variety of different fall themed crafts that they can create. Throughout the class we will be doing all sorts of crafts that are fun and new to your children! We will be creating fall artwork that can be hung and played with such as pasta pumpkin, spider web, leaf art, and handprint crafts!

Date: October 1 - November 5

Day: Tuesday

Time: 5:00 p.m. - 5:45 p.m.

Ages: 7 - 12 years

Location: Krueger Park Activity Room C

Min/Max: 8/12

Fee: \$43 Resident, \$48 Non-Resident

I've Got Game

221223-01

Kids will become familiar with passing, dribbling, shooting and the basic rules of the game. Teamwork, good sportsmanship, and fun are all stressed in this exciting class. **NOTE: Fee includes a t-shirt.**

Dates: October 9 - November 20

Day: Wednesday

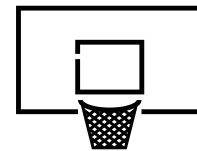
Time: 5:00 p.m.- 6:00 p.m.

Ages: 7 - 9 years

Location: Krueger Park Gym South

Min/Max: 8/15

Fee: \$52 Resident, \$57 Non-Resident



Colorful Creations

226200-01

Come and join us for a one day program of bracelet making and perler beads! Pick your favorite colored beads and create a personalized accessory to wear or bring home. Children will be able to bring in their own bracelet making kits but we will be providing some as well. Let your creativity shine! **NOTE: Pizza and refreshments will be provided.**

Day & Date: Wednesday, September 25

Time: 5:30 p.m. - 6:30 p.m.

Ages: 7 - 12 years

Location: Krueger Park Activity Room C

Min/Max: 8/20

Fee: \$18 Residents, \$20 Non-Residents

Rim Seekers

221278-01

This 7 week class is the perfect class for the future basketball star. This class is going to be game based so your child will get to know the flow of playing in a real basketball game. Games will be played every week and will be paused throughout the game for teaching. Other games like 3pt contests, knockout, and free throw contests will also be played. Teamwork, good sportsmanship, and fun are all stressed in this exciting class. **NOTE: Fee includes a t-shirt.**

Dates: October 9 - November 20

Day: Wednesday

Time: 5:00 p.m. - 6:00 p.m.

Ages: 10 - 14 years

Location: Krueger Park Gym North

Min/Max: 8/15

Fee: \$52 Resident, \$57 Non-Resident

Our Dance Program Runs For Approximately 29 Weeks From September 12 - May 10.

Please check the calendar for your days off. It will be posted by the doors to the dance room and online.

****Please make sure you read the IMPORTANT INFORMATION on the bottom of page 11.****

Monday Classes - Miss Gianna			
Time	Class	Program #	Fees
3:30 - 4:00 p.m.	Pre-Ballet	702702-04	\$126R/\$131NR
Monday Classes - Miss Adelina			
4:00 - 4:30 p.m.	Ballet 1	702702-01	\$126R/\$131NR
4:30 - 5:00 p.m.	Mini Poms	702707-01	\$151R/\$156NR
Monday Classes - Miss Adelina			
5:00 - 5:30 p.m.	Hip Hop 1	702705-01	\$126R/\$131NR
5:30 - 6:00 p.m.	Jazz 1	702733-01	\$126R/\$131NR
6:00 - 6:30 p.m.	Tap 1	702701-01	\$126R/\$131NR
6:30 - 7:00 p.m.	Ballet 1	702702-02	\$126R/\$131NR
Monday Classes - Miss Emily			
7:15 - 8:00 p.m.	Varsity Poms A	702707-03	\$161R/\$166NR
8:00 - 8:45 p.m.	Hip Hop 5/6	702705-05	\$136R/\$141NR
Tuesday Classes - Miss Aryanna			
4:00 - 4:30 p.m.	Ballet 2	702702-05	\$126R/\$131NR
4:30 - 5:00 p.m.	Tap 2	702701-02	\$126R/\$131NR
5:00 - 5:45 p.m.	Jazz 2	702733-02	\$136R/\$141NR
5:45 - 6:15 p.m.	Hip Hop 2	702705-02	\$126R/\$131NR
Tuesday Classes - Miss Isabella			
6:30 - 7:30 p.m.	Ballet 5/6	702702-08	\$146R/\$151NR
7:30 - 8:15 p.m.	Lyrical 5/6	702706-04	\$136R/\$141NR
8:15 - 9:15 p.m.	Jazz 5/6	702733-06	\$146R/\$151NR

PRE-BALLET (Ages 3 - 5 Years): In this level, we focus on dance and rhythm using exercises that enable the child to discover musicality and creative movement. We will concentrate on the beginnings of ballet such as skips, gallops, walks, plies, port de bras, and attention to clean and consistent footwork.

BALLET (Ages 5 & Up): In these levels, we use floor exercises that promote coordination, strength and flexibility. As the levels increase, additional focus will be placed on the following ballet techniques: proper body placement and carriage of the arms and head, free movement, jumps, and traveling across the floor. It is vital that a student learns how to feel and correctly utilize the center core of their body which is the basis of balance and strength in dance. Higher level students should understand advanced concepts of ballet such as: placement and alignment of the body, clean footwork, positions of arms and feet, and correct muscle use. The training and expectations, both technical and behavioral, intensifies with each level.

POINTE (Instructor Permission): Students in ballet ready to start pointe classes will be allowed on pointe only at the discretion of the teacher. Pointe work takes a great deal of strength and

focus to maintain proper technique and to prevent injury.

LYRICAL (Levels 3 & Up): Lyrical dance is a style that combines ballet and jazz techniques. It is performed to music that it inspires expression of strong emotions the choreographer and dancer feel from the lyrics of the song. Lyrical steps include combinations of movement and technical steps.

TAP (Ages 5 & up): Children will have fun learning basic tap steps emphasizing basic motor control and rhythmic concepts. Higher level students will progressively build upon fundamental tap techniques arranged in combinations and performed in the recital. Students will improve the speed and articulation of their footwork as level increase.

JAZZ (Ages 5 & up): This is a high-energy dance class, which develops flexibility, rhythm, extension, balance, speed and strong movement in dancers, preparing them for a lifetime of dancing. Students who focus on jazz classes build upon the movements and foundational techniques that becomes helpful for the team.

HIP-HOP (Ages 5 & up): Students will learn different hip-hop techniques. We will use the latest sounds in R&B, alternative rock, acoustic, and pop music.

POMS: All poms teams will be performing at the Children's Christmas Party, along with 2 or 3 other competitions TBA. There is an additional fee for competitions. Poms girls are also included in the annual recital. **Since Poms is a competing team, every child must take at least one additional class. (i.e. jazz, ballet, or hip hop). You cannot take just Poms. MINI DIVISION (K - 2nd), JUNIOR DIVISION (3rd - 5th), VARSITY DIVISION (6th & Up)**

TECHNIQUE: This class consists of going back to the basics of dance. This class will build off of prior knowledge and ability to develop precision and accuracy in technical skills. Students will work on proper alignment, strength, flexibility, understanding of body awareness and mobility to help improve their execution of leaps, turns, jumps and other dance skills/tricks. This is not a recital class.

DANCE & POMS

11

Wednesday Classes - Miss Sarah

Time	Class	Program #	Fees
4:00 - 4:45 p.m.	Ballet 4	702702-06	\$136R/\$141NR
4:45 - 5:30 p.m.	Lyrical 4	702706-02	\$136R/\$141NR
5:30 - 6:00 p.m.	Tap 4/5	702701-04	\$126R/\$131NR
6:00 - 6:30 p.m.	Pre-Ballet	702702-03	\$126R/\$131NR
6:45 - 7:30 p.m.	Hip Hop 4	702705-04	\$136R/\$141NR
7:30 - 8:15 p.m.	Jazz 4	702733-04	\$136R/\$141NR
8:15 - 9:00 p.m.	Varsity Poms B	702707-04	\$161R/\$166NR

Thursday Classes - Miss Liz

4:00 - 4:45 p.m.	Performance A	702704-01	\$200R/\$205NR
4:45 - 5:30 p.m.	Performance B	702704-02	\$200R/\$205NR
5:30 - 6:15 p.m.	Intermediate Technique	702709-01	\$175R/\$180NR
6:30 - 7:15 p.m.	Performance C	702704-03	\$200R/\$205NR
7:15 - 8:00 p.m.	Advance Technique	702709-02	\$175R/\$180NR
8:00 - 8:45 p.m.	Performance Lyrical	702704-06	\$200R/\$205NR
8:45 - 9:30 p.m.	Performance Jazz	702704-05	\$200R/\$205NR

Friday Class - Miss Gianna

4:00 - 4:30 p.m.	Pre-Ballet	702702-09	\$126R/\$131NR
------------------	------------	-----------	----------------

Friday Classes - Miss Sarah

4:30 - 5:15 p.m.	Ballet 3	702702-10	\$136R/\$141NR
5:15 - 6:00 p.m.	Lyrical 3	702706-01	\$136R/\$141NR
6:00 - 6:30 p.m.	Tap 3	702701-03	\$126R/\$131NR
6:30 - 7:15 p.m.	Jazz 3	702733-03	\$136R/\$141NR
7:15 - 8:00 p.m.	Junior Poms	702707-02	\$161R/\$166NR
8:00 - 8:45 p.m.	Hip Hop 3	702705-03	\$136R/\$141NR

Saturday Classes - Miss Liz

10:00 - 10:30 a.m.	Intermediate Pointe	702702-12	\$133R/\$138NR
10:00 - 11:00 a.m.	Advanced Pointe	702702-13	\$217R/\$222NR
11:00 - 12:00 p.m.	Advanced Ballet	702702-11	\$217R/\$222NR
12:15 - 1:00 p.m.	Advanced Lyrical	702706-05	\$176R/\$181NR
1:00 - 2:00 p.m.	Advanced Jazz	702733-07	\$217R/\$222NR
2:00 - 2:30 p.m.	Heels	702701-05	\$133R/\$138NR

HHPD PERFORMANCE TEAM

The HHPD Company Dancers are offered the opportunity to participate in competitions and showcases in the Chicagoland area as well as out of state. In the past HHPD dancers have performed at Great America, Disney World, Disneyland, Legere Nutcracker, the children's division of the Joffrey Ballet Nutcracker, and Dance Chicago.

Required Performances: 2 weekend dance performances in Chicago (approximate cost is \$65.00 per dance).

Registration Fee/Auditions: All Participants who would like to join the performance team must pay the registration fee and attend an audition.

In order to be on the performance team it is required that you take at least one other class (ballet, lyrical, jazz, hip hop or technique) You cannot just take a performance class. All performance team members are highly encouraged to take technique.

IMPORTANT DANCE INFORMATION:

* The first two-weeks are preliminary. You/your child may be asked to change class levels. We ask you please follow the instructors recommendations

*Never danced with us before? Please speak with Ms. Tammy or Ms. Liz for placement.

* Upon registration, you will need to sign off on the parent/student handbook. In this handbook, you will find all of the important information needed regarding the dance program such as: conduct, additional costs, spring recital costume

fees, recital ticket fees, dates, and times. Recital is tentative date is Sunday, May 18th.

* Make sure the office has an **updated** e-mail address on file. This is the only way to stay current with important information about your child's class. We have over 200 households in our classes, we are unable to call everyone. All important information is also put on our web site, so check our website (hhparkdistrict.org) often.

* No refunds once dance begins, even for medical reasons.

* No snow days will be made up, however, in event of a snow day, we may offer virtual classes.

* Register early! We can only have a max of 12 students in a class. The Park District cannot save a spot in any class for any reason.

* It is recommended you attend the first day of class with your child. Important information will be sent home about where to buy shoes, days off, view days, emails we send out, and our website. * **ADDITIONAL COSTS:** There are additional costs to our dance program that include, but not limited to, the **required** shoes, recital costume, recital tights, recital leotard, & recital tickets. **Optional expenses** include: recital pictures, recital Blu-Ray, or jump drive, and fund raising.

12 ILLINOIS SHOTOKAN KARATE

Illinois Shotokan Karate Club is Chicagoland's premier karate school taught under the instruction of John DiPasquale, four-time National Champion and President of the American Shotokan Karate Association.

Beginner students will not be permitted to register into the current session after the second class has met. Registration for continuers through advanced students will be accepted after the start date, but the full class fee is required plus the late fee.

Uniforms and belt-testing are options available through the ISKC instructor. At additional cost

PRE-KARATE (4-6 years) • Young children will develop flexibility, strength, and coordination in fun, yet disciplined, activities. This program is specifically designed for growing minds and bodies to enhance memory and agility, Watch your child's confidence blossom and their skills improve.

YOUTH/ADULT KARATE (7 years and up) • Karate classes will put children in touch with their bodies and offers a good mix of strength training, with cardiovascular and flexibility exercises.

Students increase their coordination, agility and poise, as well as learn lasting personal safety skills. They also benefit from the mental stimulation of learning the choreographed moves of the kata and the discipline of conforming to the class rules.

These classes are an excellent way to spend quality time with your child, while conditioning muscles, developing coordination, and improving cardiovascular fitness. **Fees are per person.**

NOTE: Participants should wear loose fitting clothes to class. Through the cooperation of the Oak Lawn Park District and the Illinois Shotokan Karate Club, we are able to offer Hickory Hills residents additional classes at the Oak Lawn Park District at a resident rate. Registration for Oak Lawn classes is taken at the pavilion: Oak Lawn Park District, 9401 S. Oak Park Ave., 708-857-2420. Residents of Hickory Hills or Oak Lawn-- receive resident rate. Any registration for Tuesday classes received after 5:00 p.m. on Tuesday, September 3 & registration for Saturday classes received after 5:00 p.m. on Friday, September 6 will be charged a \$15 late fee.

Classes are held at Krueger Park, 9100 S. 88th Avenue.

Tuesday Classes September 3 - December 10			
15 Weeks of Karate \$218 Resident, \$223 Non-Resident			
Program #	Time	Level/Color	Age
201213-02	6:00 p.m. - 7:00 p.m.	Beginner/Novice White - Orange	7 & Up
201213-03	7:00 p.m. - 8:00 p.m.	Intermediate Yellow - Purple	7 & Up
201213-04	8:00 p.m. - 9:00 p.m.	Advanced Brown - Black	7 & Up

Saturday Classes September 7 - December 14			
15 Weeks of Karate \$218 Resident, \$223 Non-Resident			
Program #	Time	Level/Color	Age
201213-01	9:00 a.m. - 9:55 a.m.	Beginner/Continuer Pre-Karate	4 - 6
201213-05	10:00 a.m. - 11:00 a.m.	Beginner/Novice White - Blue	7 & Up
201213-06	11:00 a.m. - 12:00 p.m.	Intermediate Green - Black	7 & Up



YOUTH PROGRAMS

13

MMA - Mixed Martial Arts

Join us for the most effective styles of martial arts, infused with lessons on character development. Students will train in a positive atmosphere, learn how to defend themselves and gain valuable life skills – all while having fun! This is done through our structured curriculum. Students will focus on Boxing and kickboxing techniques (kicking, footwork, and defense), judo/wrestling technique (take-downs and defending take-downs) and “Mat Chat” (the personal development topic of the program). **NOTE: No Class on October 31, November 28.**

Dates: Oct. 10 - Dec. 12
Day: Thursday
Time: 6:00 - 7:00 (5 - 11 years) 221208-02
7:00 - 8:00 (11 - 15 years) 231208-01

Instructor: Victory Family MMA
Location: Krueger Park Gym South
Min/Max: 8/20
Fee: \$114 Resident, \$119 Non-Resident

Flag Football 221244-01

Flag Football is a fast-paced game where players, dodge, dash and strategize to steal flags instead of tackling. Games will be played each week forming new teams during this 6 week program. **NOTE: Fee includes a t-shirt and equipment. No tackling allowed during this sport.**

Dates: September 24 - October 29
Day: Tuesday
Times: 4:30 p.m. and 5:00 p.m.
Location: Krueger Park Gym
Ages: 9 - 13 years
Min/Max: 8/24
Fee: \$55 Resident, \$60 Non-Resident

Glow in the Dark Dodgeball 221286-01

Turn down the lights and put on some neon! Come out and enjoy a fun new way of playing dodgeball in the dark! A night full of fun, laughter, and pizza. Glowsticks will be given to wear, and pizza and refreshments will be served. Come with a bright shirt on and get ready to dodge, dip, and dive.

Day & Date: Friday, November 15
Time: 6:30 p.m. - 8:00 p.m.
Ages: 9-12 years
Location: Krueger Park Gym
Min/Max: 10/20
Fee: \$13 Resident, \$15 Non-Resident

Recreational Volleyball 221276-01

This instructional program for boys and girls will stress overhand serving, passing, setting, footwork and fun. Scrimmages will be held each week. **NOTE: No Class Oct. 31**

Dates: October 3 - November 21
Day: Thursday
Beginner
Time: 4:30 p.m. - 5:45 p.m. 221276-01
Intermediate
Time: 6:00 p.m. - 7:15 p.m. 221276-02
Ages: 10-16 years
Location: Krueger Park Gym
Min/Max: 8/12
Fee: \$50 Resident, \$55 Non-Resident

Friday Hoops

Play basketball with your friends or just come out to shoot around. Pay at the door and enjoy fast break games. A maximum of 25 players are allowed in the gym at one time. **NOTE: All players must fill out a Friday Hoops form before participating. No Hoops Sept 13, Oct 18, 25, and Nov 1, 15. CASH ONLY.**

Dates: September 6 - November 22
Day: Friday
Grades/Times: 5th - 8th Grade 221236-01
4:00 p.m. - 6:00 p.m.
9th - 12th Grade 231236-01
6:30 p.m.- 8:30 p.m.
Location: Krueger Park Gym
Min/Max: 12/25
Fee: PAY AT THE DOOR (Cash Only)
\$6 each day 5th - 8th Grader
\$8 each day 9th - 12th Grade

Horseback Riding Lessons

Staff will teach riders for pleasure or to show competitively. All riders must sign a release waiver and wear safety helmet while riding. Helmets are available to rent for \$2 per time. All riders must wear long pants. No shorts. All lessons are fully-supervised. **NOTE: Bring your receipt to the stables to set-up time and day. Call 708-598-7718 to inquire about intermediate and advanced riding lessons or visit their website at www.newtraditionridingacademy.com.**

Dates: September - November
Day & Time: Arrange with stables
Location: New Traditions Riding Academy
10100 S. Kean Ave.

Fees: Beginner: \$265 (5x Lessons) 201248-01
Beginner: \$530 (10x Lessons) 201248-02
Ages: 7 years & up
Non-residents pay \$10 more to the prices listed above.

Junior Wednesday Night Soccer 321319-01

This soccer league is for players 5 - 8 years of age. Each team will consist of 7 - 8 players. League will consist of 1 practice and 7 scrimmages. **NOTE: All players will receive a t-shirt. Parents interested in coaching should contact the Recreation Manager at 708-599-7337.**

Dates: October 16 - December 4
Day: Wednesday
Game Times: 6:15 p.m. or 7:00 p.m.
Ages: 5-8 years
Location: Krueger Park Gym
Min/Max: 21/30
Fee: \$53 Resident, \$58 Non-Resident

Wednesday Night Soccer 321387-01

This soccer league is for players 9 - 12 years of age. Each team will consist of 6 - 8 players. Each team will play 8 scrimmages. **NOTE: All players will receive a t-shirt. Parents interested in coaching should contact the Recreation Manager at 708-599-7337.**

Dates: October 16 - December 4
Day: Wednesday
Game Times: 7:00 p.m. or 7:45 p.m.
Ages: 9-12 years
Location: Krueger Park Gym
Min/Max: 21/28
Fee: \$53 Resident, \$58 Non-Resident



South Suburban Traveling Fall Soccer League

Games will be played on Saturday afternoons or evenings and one game will be played on a Tuesday, Thursday, or Friday evening. About half of the games will be played in Hickory Hills. Practice dates are listed below and are tentative. Practice times to be determined by coach. Coaches will notify players of exact day, time, and field location of first practice. **NOTE: Special requests are not guaranteed. Ages for divisions are as of August 1, 2024. If more than one child is registered and are in different divisions, please inform park staff at time of registration to consider during scheduling. Fee includes jersey, shorts, socks, trophy or medal, and an awards ceremony (pizza & pop). DEADLINE FOR REGISTRATION IS August 25.**

Dates:	August - October (Games begin in September)	Division:	Grade:	Practice Days:	Program #:
Min/Max:	12/20 per division	Super Pee Wee Division:	Pre-K-K	Tues or Thurs	221209-01
Fee:	\$102 Resident, \$107 Non-Res.	Pee Wee Division:	1st-2nd	Tues or Thurs	221209-02
		Junior Division:	3rd-5th	Mon & Wed	221209-03
		Senior Division:	6th-8th	Mon & Wed	221209-04

Indoor Soccer - Little Kickers 311330-01

This introductory soccer league is a shortened version of our youth soccer program and is designed to help transition children into team play. Modified, non-competitive games will be played. This league will be run in a low key environment and coaches will be more hands on during games. **Birth date as of September 1, 2024** will determine division placement. A birth certificate may be requested if there is a question of a child's age. Games and practice times will vary from week to week and may be adjusted depending on number of teams formed. Coaches needed! **Your coach will notify you to let you know what time your first practice will be held.**

Dates: December - March
Day: Saturday
Time: 9:00 a.m. - 11:00 a.m.
 Game times/practice times are approximate and are dependant on number of teams in each division
Ages: 4-5 Years
Location: Oak Lawn Park District,
 9401 S. Oak Park Ave., Oak Lawn, IL
Min/Max: 12/14
Fee: \$81 Resident, \$91 Non-Resident

Co-Ed Youth Indoor Soccer

Teams will be formed by a blind draft policy and will compete against teams from neighboring park districts. Teams will practice in December and will begin play in January. Games and practice times will vary week to week, and may be adjusted depending on the number of teams formed. **Birth date as of September 1, 2024** will determine age division. Birth certificates may be requested if there is a question of a child's age. Coaches needed! Sign up early! **Your coach will notify you to let you know what time your first practice will be held.**

Dates: December - March
Day: Ages: Time:
Saturday 6-7 11:00 a.m. - 3:00 p.m. 321317-01
Saturday 8-9 3:00 p.m. - 8:00 p.m. 321317-02
Sunday 10-11 1:00 p.m. - 3:00 p.m. 321317-03
Sunday 12-13 3:00 p.m. - 6:00 p.m. 321317-04
Location: Oak Lawn Park District,
 9401 S. Oak Park Ave., Oak Lawn, IL
Min/Max: 12/16
Fee: \$113 Resident, \$123 Non-Resident
 Game times/practice times are approximate and are dependant on number of teams in each division

FITNESS CENTER

15

Resident rate is for Hickory Hills and Palos Hills Residents.

Fitness Center Membership

	Resident	Non-Res.	Program #
Annual Individual Rate (16 - 61 years)	\$195.00	\$260.00	641694-01
Married/Spouse or couple with formalized commitment agreement in the same household	\$285.00	\$385.00	641694-01
Add An Additional Family Member	\$90.00	\$125.00	641694-01
Annual Senior Rate (62 years and over)	\$115.00	\$155.00	651693-01
Annual Senior Married/Spouse Rate	\$180.00	\$220.00	651693-01
6-Month Membership (consecutive months)	\$130.00	\$165.00	641694-02
6-Month Membership (consecutive, Married/Spouse)	\$200.00	\$270.00	641694-02
Additional Family Member 6-Month Membership (consecutive months)	\$70.00	\$105.00	641694-02
Winter Break College Students (Dec.2 nd - Jan 5 th)	\$40.00	\$45.00	641694-06
Hydro Massage Wellness - 3-Months Unlimited (Member) (limit one use per day)	\$25.00	\$25.00	641602-01
Hydro Massage Wellness - 3-Months Unlimited (Non-Member)(limit one use per day)	\$35.00	\$35.00	641602-01
Guest Pass- Valid on date of purchase only	\$6.00	\$8.00	641694-03
Daily Punch Card (6 Punches)	\$36.00	\$48.00	641694-04

Walking Track Membership

	Resident	Non-Res.	Program #
Individual (16 - 61 years)	\$65.00	\$90.00	641655-01
Senior (62 years & over)	\$50.00	\$90.00	651656-01
Daily Pass Individual	\$2.00	\$3.00	641656-01

Memberships, unless otherwise stated, are good for one year from date of registration.

Fall Fitness Center / Walking Track Hours (September 3 - December 1)

Monday - Friday - 5:30 a.m. - 9:00 p.m.
 Saturday - 7:00 a.m. - 4:00 p.m.
 Sunday - 8:00 a.m. - 3:00 p.m.

Fitness Center Holiday Hours

Sept. 2 8:00 a.m.- 12:00 p.m.
 Nov. 28 8:00 a.m.- 12:00 p.m.
 Nov. 29 5:30 a.m.- 6:00 p.m.

Family Member Rate Policy:

An immediate family member is defined as a married/spouse, and/or child(ren) living in the same household, that is 24 years old or younger (14 - 24 years).

MEMBERSHIP CATEGORIES INCLUDE:

Fitness Center Memberships - Includes fitness center, locker rooms, & walking track access.

Walking Track Memberships - Allows member access to walking track & locker rooms only.

Individual Members are defined as adults 16 and over.

Additional family members are defined as children (14-24 years) residing in the same household.

All family memberships will expire on the same day.

If you have any medical concerns (including pregnancy), consult your physician before using the walking track and/or fitness center equipment. No refunds/credits will be made on any memberships or daily passes. No refunds for any medical reasons.



Sore Muscles? Stress? Hydro Massage!

Relax and refresh with a warm water massage!

Membership	Unlimited 3-month	Single use
	15 mins (once per day)	15 mins (each use)
Fitness Members	\$25	\$4
Non-Members	\$35	\$5

Benefits of Hydro Massage:

- *Relieve Arthritis
- *Increase flexibility
- *Relieve muscle soreness
- *Speed up recovery
- *Decrease general pain
- *Increase circulation

Note: You don't have to get undressed. You can enjoy your massage fully clothed and comfortable.

To replace a lost or stolen fitness center card, the fee is \$7 per card.

Locker Rental Fees:

Resident: 6-Months	\$15	Men's	641600-01
		Women's	641600-02
Non-Resident: 6-Months	\$20	Men's	641600-01
		Women's	641600-02

Retirement Planning Today Course**246210-01**

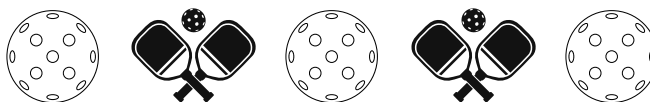
Join us for this two-day course where you will learn ways to determine the amount of money needed to retire along with other tips to plan your retirement income. This class will also help you understand how inflation can impact your retirement planning decisions. **Note: Refreshments and snacks will be included with the course.**

Day & Date: Wednesday, Sept. 25 & Oct. 2**Time:** 6:00 p.m. - 9:00 p.m.**Ages:** 50 years & up**Location:** Krueger Park Activity Room**Min/Max:** 8/16**Fee:** \$50 Resident, \$55 Non-ResidentRecommended
by Staff**Instructional Pickleball**

Have you ever thought of trying to play Pickleball but not sure how to play? Well now is the time to learn the popular trend called Pickleball. It's a little like badminton, a little like tennis and a little like table tennis. The rules are short and simple and the racquets and balls are light weight. Played on a badminton sized court (two on a side) with a low net, the first team to score 11 points wins. We will instruct you on the rules and how to play the game.

Dates: Sept. 9 - Oct. 7 **241240-01**
Oct. 21 - Nov. 18 **241240-02****Day:** Monday**Time:** 6:30 p.m. - 7:30 p.m.**Ages:** 16 years & up**Location:** Krueger Park Gym**Min/Max:** 8/16**Fee:** \$47 Resident, \$52 Non-Resident**Indoor Pickleball Open Gym** **341340-01**

Join this really fun and popular game! It's a little like badminton, a little like tennis and little like table tennis. The rules are short and simple and the racquets and balls are light weight. Played on a badminton sized court (two on a side) with a low net, the first team to score 11 points wins. Please bring your own paddles and balls, if you have them.

Date: Sept. 9 - Dec. 16**Day:** Monday**Time:** 7:30 p.m. - 9:00 p.m.**Ages:** 16 years & up**Location:** Krueger Park Gym**Min/Max:** 8/20**Fee:** \$5 Resident, \$7 Non-Resident**Open Gym - Basketball (Unscheduled)** **641675-01**

Any open gym for basketball (not designated) will require a small fee to play. Call 708-599-7337 for availability. 18 years & older. **Fee:** \$5 Resident, \$7 Non-Resident **CASH ONLY**

**Acting for Adults****346302-01**

This class is intended for both beginning and more advanced actors. Focus will be on developing the actor's instrument, as well as work on scripted material, including scene work and audition pieces. Actors will be encouraged to give each other feedback, so that they are fully participating at all times. **No Class Nov. 27**

Dates: October 9 - December 4**Day:** Wednesday**Time:** 6:30 p.m. - 8:30 p.m.**Ages:** 18 years & up**Location:** Krueger Park Rec. Activity Room C**Min/Max:** 8/16**Fee:** \$88 Resident \$93 Non-Resident**Wednesday Night Hoops** **641675-05**

Play basketball with your friends or just come out to shoot around. Water bottles are allowed. A maximum of 20 players will be allowed in the gym at one time. No spectators. Anyone not following the rules will be asked to leave with no refund up to being suspended from the program. **NOTE: No Hoops Oct 2. Pay at the door each night. CASH ONLY!**

Dates: September 4 - October 9**Day:** Wednesday**Time:** 7:00 p.m. - 9:00 p.m.**Ages:** 21 years & up**Location:** Krueger Park Gym**Min/Max:** 8/30 per session**Fee:** \$6 Resident (each day - pay at the door)

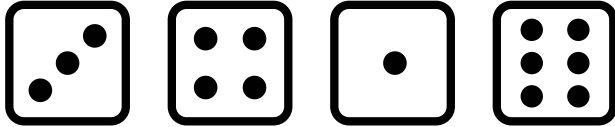
\$8 Non-Resident (each day - pay at the door)

Farkle 246236-01

Enjoy an evening of Dice! Farkle is a dice game in which the goal is to get the highest score on the highest round of play. You will be treated to dinner and refreshments and a chance to win some fabulous gift certificates.

NOTE: If you do not know how to play, come early and we will teach you before we get started. Dinner and refreshments will be served.

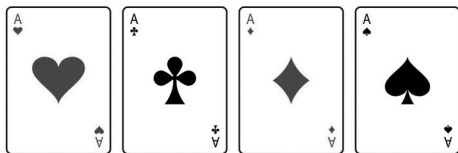
Day & Date: Friday, November 8
Time: 7:00 p.m. – 9:00 p.m.
Ages: 21 years & up
Location: Krueger Park Activity Room C
Min/Max: 10/24
Fee: \$16 Resident, \$18 Non-Resident



“21 Double Down 256205-01

Do you love the game of “Blackjack”? We will enjoy lunch, refreshments, and dessert before trying our luck in cards. Many prizes will be awarded after the competition. All levels are welcome!

Day & Date: Thursday, October 10
Time: 11:30 a.m. - 2:00 p.m.
Ages: 21 years & up
Dealer: Angel Sanchez
Location: Krueger Park Activity Room C
Min/Max: 15/22
Fee: \$17 Resident, \$19 Non-Resident



Left, Center, Right 246221-01

LCR, short for “Left, Center, Right”, is a simple dice game to play. Participants roll three dice marked with 3 individual dots, Left, Center, and a Right. The point of the game is to roll a dot(s) in order to win the game. You will be treated to **pizza and refreshments**, and a chance to win some fabulous prizes.

Day & Date: Friday, September 27
Time: 7:00 p.m. - 9:00 p.m.
Ages: 21 years & Up
Location: Krueger Park Activity Room C
Min/Max: 10/24
Fee: \$16 Resident, \$18 Non-Resident

Phase 10 246220-01

The goal of the game is to complete all ten phases, one round at a time. At the end of a round players will add up their score based on the number and type of cards left in their hand. The goal is to have the lowest score at the end of the game. Watch out, if you don't complete your phase in a round, you must repeat the phase in the next round! Gather some friends and play. Try different strategies to achieve the lowest score you can, but most of all have fun! You will be treated to dinner and refreshments and a chance to win some prizes.

Day & Date: Friday, October 25
Time: 7:00 p.m. - 9:00 p.m.
Ages: 21 years & up
Location: Krueger Park Activity Room C
Min/Max: 10/24
Fee: \$16 Resident, \$18 Non-Resident



Texas Hold'em 246206-01 Poker Tournament

Join us for this popular style of poker where prizes will be awarded after the competition. New players are welcome to play and learn while enjoying a boxed lunch and refreshments.

Day & Date: Thursday, November 14
Time: 11:30 a.m. - 2:00 p.m.
Ages: 21 years & up
Dealer: Angel Sanchez
Location: Krueger Park Activity Room C
Min/Max: 12/16
Fee: \$17 Resident, \$19 Non-Resident

18 ADULT/MATURE ADULT ACTIVITIES

Bingo Night

Enjoy a refreshing beverage with snacks and dinner while you engage in a variety of bingo games (18-25). Prizes will be awarded for each game winner. Sit down & enjoy the company of your friends as we'll do the rest. Every player will get to create their own Bingo card for the grand prize game! **NOTE: Every player will receive multiple cards. Fee includes prizes, snacks, dessert, refreshments (coffee, pop, & water), and dinner.**

Day & Date: Tuesday, Sept. 10 255275-02
Thursday, Nov. 7 255275-03
Time: 5:30 p.m. - 8:00 p.m.
Ages: 21 years & up
Location: Krueger Park Activity Rooms A & B
Min/Max: 30/50
Fee: \$21 Resident, \$23 Non-Resident

Bunco Blast 246274-01

Enjoy an evening of Dice! Sign up to play this old parlor dice game at Krueger Park. You will be treated to **pizza, popcorn, refreshments**, and a chance to win some fabulous **gift certificates** and prizes. **NOTE: Beginners are welcome.**

Day & Date: Friday, October 4
Time: 7:00 p.m. - 9:00 p.m.
Ages: 21 years & up
Location: Krueger Park Activity Rooms C
Min/Max: 8/24
Fee: \$16 Resident, \$18 Non-Resident

Pinochle

How about a game of Pinochle? Participants will teach you how to play the entertaining game of Pinochle. Once you learn, you'll be hooked forever. **NOTE: Fee includes pizza, refreshments, and prizes for each table winner.**

Day & Date: Tuesday, October 22 256202-01
Tuesday, November 26 256202-02
Time: 11:30 a.m. - 2:00 p.m.
Ages: 50 years & up
Location: Krueger Park Activity Room C
Min/Max: 8/30
Fee: \$12 Resident, \$14 Non-Resident

Spades - Card Game 246230-01

The game of Spades is a partner game that is easy to learn. This is a partner game that involves strategy in working together to win. Making friends with the Ace of Spades as it's the High trump card and is always a winner. Register for this enjoyable day at Krueger Park. New players are welcome to play and learn while enjoying lunch and refreshments.

Day & Date: Tuesday, October 29
Time: 11:30 a.m.- 2:00 p.m.
Ages: 21 years & up
Location: Krueger Park Activity Room C
Min/Max: 8/16
Fee: \$16 Resident, \$18 Non-Resident

YOGA

Chair Yoga

Chair Yoga is a unique yoga style that adapts yoga positions and poses through creative use of a chair. The chair replaces the mat and becomes an extension of the body. Bring a water bottle with you. Anyone can practice yoga regardless of age, experience, or level of flexibility – we can all benefit from yoga.

Dates: September 16 - October 21 251220-01
November 4 - December 9 351320-01
Day: Monday
Time: 5:15 p.m. - 6:15 p.m.
Ages: 50 years & up
Instructor: Pam Lawrence
Location: Krueger Park Activity Room A & B
Min/Max: 10/24
Fee: \$54 Resident, \$59 Non-Resident

Hatha Yoga

Hatha Yoga is about finding a balance between the body, mind, and spirit. Hatha yoga uses body poses, breathing techniques and meditation in hopes of bringing flexibility, and manage stress. It is always advisable, especially if pregnant, to consult a physician before undertaking any physical activity. Bring your mat and water bottle.

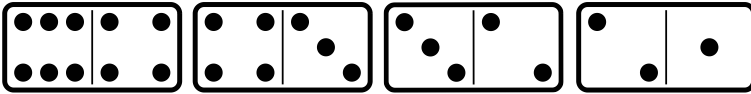
Dates: Sept. 16 - Oct. 21 243220-01
Nov. 4 - Dec. 9 343320-01
Day: Monday
Time: 6:30 p.m. - 7:30 p.m.
Ages: 16 years & up
Instructor: Pam Lawrence
Location: Krueger Park Activity Room A & B
Min/Max: 8/14
Fee: \$54 Resident, \$59 Non-Resident

ADULT/MATURE ADULT ACTIVITIES 19

Dominoes

This is an easy game with simple rules, but the fun is limitless. Lunch will be served around noon. **NOTE: Fee includes coffee, soda, lunch, & prizes.**

Day & Date: Friday, October 11 256216-01
Friday, November 8 256216-02
Time: 11:00 a.m. - 2:30 p.m.
Ages: 25 years & up
Location: Krueger Park Activity Rooms A & B
Min/Max: 20/35
Fee: \$12 Resident, \$14 Non-Resident



Progressive Rummy

Progressive Rummy is a very easy game to learn. Each hand has a different wild card. Register for this enjoyable day at Krueger Park. **Fee includes: Coffee, soda, lunch, & prizes.**

Day & Date: Friday, October 4 256245-01
Friday, November 15 256245-02
Time: 11:00 a.m. - 2:30 p.m.
Ages: 50 years & up
Location: Krueger Park Activity Room A & B
Min/Max: 20/35
Fee: \$12 Resident, \$14 Non-Resident

SENIOR LUNCHEON

Welcome Newcomers Luncheon 256290-01

We have always looked forward to introducing new participants to our programs and now is the time to bring someone new to our luncheons. If you recommend a new participant to attend our Newcomer's luncheon and they have never attended before, you will be given a \$10 park district gift card to use towards one of our programs. The new participant who attends the luncheon will also receive a welcome gift upon attending. **NOTE: \$10 gift card is limited to the first 10 participants who recommend new participants.** Fee includes lunch, dessert, refreshments, & entertainment.

Day & Date: Tuesday, September 17
Time: 12:00 p.m. - 2:00 p.m.
Ages: 50 years & up
Location: Krueger Park Gym
Min/Max: 80/125
Fee: \$10 Resident, \$13 Non-Resident

Turkey, Turkey, Turkey Luncheon 256292-01

Celebrate a traditional Thanksgiving feast of turkey, dressing, mash potatoes and pumpkin pie with friends. After lunch, enjoy some dessert and entertainment to cap off this meal.

Day & Date: Tuesday, November 19
Time: 12:00 p.m. - 2:00 p.m.
Ages: 50 years & up
Location: Krueger Park Gym
Min/Max: 80/125
Fee: \$10 Resident, \$13 Non-Resident



1980 Tailgate Party Luncheon 256291-01

Get ready for the celebrate the Fall sports season. Wear your favorite team apparel and get ready for some grilled foods, potato salad, chips & dips. We will be sure to celebrate and root for of our local teams. **NOTE: Fee includes lunch, dessert, refreshments, & entertainment.**

Day & Date: Tuesday, October 15
Time: 12:00 p.m. - 2:00 p.m.
Ages: 50 years & up
Location: Krueger Park Gym
Min/Max: 80/125
Fee: \$10 Resident, \$13 Non-Resident



NOTE: Fee for each luncheon includes lunch, dessert, & refreshments. No refunds/credits on luncheons including medical reasons

Holiday Season Luncheon 356323-01

Enjoy the Holiday season with your friends at the park district. We will serve a delicious meal with sides and dessert. We will play some Holiday games where prizes will be awarded to winners.

Day & Date: Tuesday, December 17
Time: 12:00 p.m. - 2:00 p.m.
Ages: 50 years & up
Location: Krueger Park Gym
Min/Max: 80/125
Fee: \$10 Resident, \$13 Non-Resident

20 ADULT ACTIVITIES/GREAT ESCAPES

Easy Does It

This exercise class opens with a warm-up (8-10 minutes), which includes range of motion exercise and stretching to increase flexibility. This is followed by a 20-minute low impact “aerobic” segment to improve cardiovascular fitness. Class ends with toning, firming and more stretching. Classes are geared for seniors, and everyone is encouraged to go at his/her own pace. **NOTE: Hand weights will be available. No Class September 17, October 15, November 19. Instructor will teach class via zoom, participants will meet at C.N. Center for class.**

Dates: Session 1 Sept. 10 - Oct. 17 253207-01
Session 2 Oct. 24- Dec. 3 353307-01
Day Tuesday & Thursday
Time: 10:00 a.m. - 10:45 a.m.

Ages: 50 years & up
Location: Cynthia Neal Center
Min/Max: 10/20
Fee: \$70 Resident, \$75 Non-Resident

Four Winds Casino Resort 204204-01

Join us for an exciting day at Four Winds Casino Resort in New Buffalo, Michigan! Enjoy over 3,000 of the latest slots (1¢ to \$100) and a large selection of table games at this beautiful Midwest casino. **NOTE: Fee includes 52-54 Passenger Bus, \$15 instant credit/free slot play and a \$10 food coupon. Everyone must bring a state ID to the casino.**

Price Drop!

Day & Dates: Friday, October 18
Time: Depart 8:30 a.m.; Return 4:15 p.m.
Ages: 21 years & up
Location: Bus departs from Krueger Park
Min/Max: 40/50
Fee: \$31 Resident, \$36 Non-Resident

Christkindlemarket 304322-01 (Downtown Chicago)

The Christkindlemarket in Daley Plaza has become a special part of Christmas season in Chicago. The traditional market going back to its Nüremberg Germany origins is Chicago’s largest open air Christmas Festival. There are carolers, choirs along with many other special events. Vendors offer classic German spiced wine, sauerkraut, sausages, German beer and more. While Santa isn’t part of the Christkindlemarket, you’ll find him close by in his House on Daley Plaza. You will also be treated to a sweet treat at the end of the night.

Day & Date: Friday, December 13
Time: Depart 3:00 p.m.; Return 8:00 p.m.
Ages: All ages (under 16 must be accompanied by an adult)
Location: Bus departs from Kruger Park Rec. Center 9100 S. 88th Ave
Min/Max: 32/32
Fee: \$32 Resident, \$37 Non-Resident

PLEASE REGISTER 7 - 10 DAYS PRIOR TO THE SCHEDULED TRIP OR THE EXPERIENCE MAY BE CANCELLED DUE TO LOW ENROLLMENT

Harry Potter & The Curse Child 216291-01 (Chicago Broadway Show)

When Harry Potter’s head-strong son Albus befriends the son of his fiercest rival, Draco Malfoy, it sparks an unbelievable new journey for them all—with the power to change the past and future forever. Prepare for a mind-blowing race through time, spectacular spells, and an epic battle, all brought to life with the most astonishing theatrical magic ever seen on stage. Join the next adventure and experience the wizarding world like never before at this record-breaking, Tony Award-winning hit, hailed as “one of the most defining pop culture events of the decade”. **NOTE: Seats are located in the mid-balcony.**

Day & Date: Thursday, November 21
Time: Depart 5:30 p.m.; Return 10:30 p.m.
Ages: All ages (under 16 must be accompanied by an adult)
Location: Bus departs from Kruger Park Rec. Center 9100 S. 88th Ave
Min/Max: 18/20
Fee: \$144 Resident, \$149 Non-Resident

Wind Creek Casino 244216-01

Wind Creek Chicago Southland is the newest Casino in the south suburbs. The casino will offer over 70,000 square feet of gaming space including 56 table games, 1,350 state-of-the-art slot machines, sports betting and more. Join us to experience this new casino and everything it has to offer. **NOTE: Fee includes transportation only.**

Day & Date: Friday, November 22
Time: Depart 9:30 a.m., Return 2:00 p.m.
Ages: 21 years & up
Location: Bus departs from Kruger Park Rec. Center 9100 S. 88th Ave
Min/Max: 32/54
Fee: \$31 Resident, \$36 Non-Resident

REGISTRATION FORM

Mail-in or Drop-off registration at Hickory Hills Park District,
Cynthia Neal Administration & Recreation Center, 8047 W. 91st Pl.,
or Krueger Recreation Center, 9100 S. 88th Avenue, Hickory Hills, IL 60457.

Last Name: _____ First Name: _____ Date: _____

Home Phone: _____ Work Phone: _____ Cell Phone: _____

Address: _____ City: _____ Zip: _____

Emergency Phone : _____ E-mail Address: _____

If you or your child need any special accommodations to participate in this program, or if your child has an IEP, please check box. Please note on a separate piece of paper and call (708) 598-1233 to discuss special accommodations. Indicate shirt size only if shirt is included in program fee.

Participant's First Name	Participant's Last Name	Date of Birth	Gender	Program #	Program Title	Fee
Office Use Only: F WI WIA MI DB R NR _____ Staff initial _____ Date Received						

FAMILY MEMBER RATE POLICY

An immediate family member is defined as a married/spouse and/or child(ren) that is 24 years or younger, living in the same household.

WAIVER & RELEASE IMPORTANT INFORMATION

The Hickory Hills Park District is committed to conducting its recreation programs and activities in a safe manner and holds the safety of participants in high regard. The Park District continually strives to reduce risks and asks that all participants follow safety rules and instructions that are designed to protect the participant's safety. However, participants and parents/guardians of minors registering for a program/activity must recognize that there is an inherent risk of injury when choosing to participate in recreational activities or programs. You are solely responsible for determining if you or your minor child/ward are physically fit and/or skilled for the activities contemplated by this agreement. It is always advisable, especially if the participant is pregnant, disabled in any way or recently suffered an illness, injury or impairment, to consult a physician before undertaking any physical activity.

WARNING OF RISK

Recreational activities are intended to challenge and engage the physical, mental and emotional resources of each participant. Despite careful and proper preparation, instruction, medical advice, conditioning and equipment, there is still a risk of serious injury when participating in any recreational activity. Understandably, not all hazards and dangers can be foreseen. Depending on the particular activity, participants must understand that certain risks, dangers and injuries due to inclement weather, slip and falls, poor skill level or conditioning, carelessness, horseplay, unsportsmanlike conduct, premises defects, inadequate or defective equipment, inadequate supervision, instruction or officiating, and all other circumstances inherent to indoor recreational activities exist. In this regard, it must be recognized that it is impossible for the Hickory Hills Park District to guarantee absolute safety.

WAIVER & RELEASE OF ALL CLAIMS AND ASSUMPTION OF RISK

Please read this form carefully and be aware that in signing up and participating in this program/activity, you will be expressly assuming the risk and legal liability and waiving and releasing all claims for injuries, damages or loss which you or your minor child/ward might sustain as a result of participating in any and all activities connected with and associated with this program/activity (including transportation services, when provided).

I recognize and acknowledge that there are certain risks of physical injury to participants in this program/activity, and I voluntarily agree to assume the full risk of any and all injuries, damages or loss, regardless of severity, that my minor child/ward or I may sustain as a result of said participation. I further agree to waive and relinquish all claims I or my minor child/ward may have (or accrue to me or my child/ward) as a result of participating in this program/activity against the Hickory Hills Park District, including its officers, officials, agents, volunteers and employees. By signing this waiver, I hereby grant permission for any pictures taken of participants to be used for publicity or in brochures related to the programs of the Hickory Hills Park District.

I have read and understand the refund policy as stated on the General Information pages. I have read and fully understand the above important information, warning of risk, assumption of risk and waiver and release of all claims. If registering via fax, my facsimile signature shall substitute for and have the same legal effect as an original form signature. If registering a minor participant, I further attest that I have read the above to my minor child/ward.

X _____ Date _____
Signature of parent, guardian, or adult participant 18 years or older

Participation will be denied if the signature of adult participant or parent/guardian and date are not on this waiver.

REGISTRATION INFORMATION

- Walk up registration is accepted at the Cynthia Neal Center & Krueger Park Recreation Center when the building is open. After 5 p.m., drop off registration is accepted with a check payment. **No receipt will be mailed to you unless you request one.** You may use the drop box located to the left of the front doors at the Cynthia Neal Center. This drop box is accessible 24 hours a day.
- All mail-in registration will be accepted at the Cynthia Neal Center, 8047 W. 91st Place. All mail-in registration will be processed the day it is received during registration dates. Please be sure to include the mail-in registration form, and fill-in all necessary information, as well as signing the waiver on the registration form. Mail the registration form along with appropriate program fees, and include non-resident fee when applicable. Make checks payable to the Hickory Hills Park District. Please do not send cash. The park district is not responsible for lost or late mail/drop box registration.
- No eligible participant shall, on the basis of race, sex, creed, national origin or disability be denied equal access to program activities, services or benefits or be limited in the exercise of any right, privilege advantage or opportunity.
- Registration fees for late registration will not be prorated and late fees may be added.
- All in person registration is taken at the Cynthia Neal Center, located at 8047 W. 91st Place, or Krueger Park Recreation Center, located at 9100 S. 88th Avenue.
- No one will be enrolled in any program unless the registration form is properly signed.
- All registration is on a first come, first serve basis, and no space will be held unless the fee is paid. Proof of residency must be shown at the time of registration. When programs are filled, a waiting list will be started, and an attempt will be made to create additional classes.
- A \$37 service charge will be assessed for any checks returned by the bank, along with any charge backs from a credit/debit card.
- **Programs that have not reached minimum enrollment one week prior to the first meeting may be cancelled. Register as early as possible for all classes, programs, special events, & trips.**

SOCCER COURT RULES

CAUTION: Soccer is a high risk recreational activity with inherent risks of serious injury.

- Hours: 9 a.m. until dusk.
- Do not climb on soccer goals.
- No food or drinks. No alcohol, drugs or smoking/vaping in court area.
- Park District programs have priority.
- No bikes, skateboard, scooter, or roller blades on the court.
- If others are waiting be courteous and limit time to 1-hour
- No pets allowed.
- No profanity.
- Limit play to 1-hour if others are waiting.

INFORMATION ABOUT INSURANCE

The park district is committed to conducting its recreation programs and activities in the safest manner possible. Participants and parents or guardians registering their children in recreation programs must recognize that there is an inherent risk of injury when choosing to participate in recreation activities. The park district continually strives to reduce such risks and insists that all participants follow safety rules and instructions. Please recognize that the park district does not carry medical accident insurance for injuries sustained in its programs. The cost of this insurance would make program fees prohibitive.

Due to insurance regulations, children are not allowed in adult classes with parents. The Park District is also not responsible for children left unsupervised while a parent attends a class.

CHILD PICK-UP POLICY

To insure the safety of the children, we ask you to drop off and pick up your child(ren) promptly when classes are over. Also, please instruct your child(ren) to wait inside the building for you when class is over. Instructors/Coaches will not allow child(ren) under 10 years of age to leave without an adult or older sibling. Children, whose parents fail to pick them up before a specified time, will be taken to the office until a parent arrives. If a child is not picked up within 10 minutes, the park district will contact the child's emergency phone number. If the park district cannot reach anyone, the child will be held until closing time or for a maximum of two hours, whichever comes first. There will be a \$5.00 late fee per child assessed for every 10 minutes you are late picking up your child(ren) after class. All fees must be paid in cash before your child can continue in the class or register for any future classes. If no one can be contacted at closing time of the building, or by the maximum time limit of two hours, the police will be contacted and your child will be taken into protective custody until a parent or guardian can be notified. Once under police jurisdiction, the park district is not responsible for any legal ramifications. If you are late and the building is closed, and you are unable to reach park district staff:

1. Contact the people on your emergency form to verify whether or not any of them have your child.
 2. Call the police (708-598-1313) if you cannot locate your child.
- More than two late pick-ups may result in your child being dropped from the program. No refund will be given.

SKATE PARK RULES**APRIL 1 - OCT 31**

- Hours of operation: 9 a.m. until dusk
- Do not use if equipment is broken or wet. Contact the Hickory Hills Park District Maintenance Department at 708-598-1233 ext. 8.
- Skaters/bikers are responsible for inspecting equipment prior to using to ensure that it has not been vandalized and is safe for skating.
- Helmets, knee & elbow pads, wrist guards are required while skating/bikers.
- No ramps, boxes, etc. may be brought into the park.
- NO GLASS in any form allowed.
- No alcohol, drugs, tobacco or vaping allowed.
- All participants will refrain from acting in any manner which may cause or contribute to death or injury to themselves or to any other persons.
- All participants will act within the limits of their ability.
- Participants are allowed to skate/bike only inside the facility.
- Profanity, fighting or any disorderly conduct will result in expulsion from the skate park.
- Graffiti of any kind is not allowed, this includes but not limited to stickers, markers, and/or spray paint.
- All participants will maintain control of their equipment while skating. The park district is not responsible for lost/stolen equipment.
- Climbing fence to gain access is strictly prohibited. Violators will be subject to arrest.
- If rules are not followed, H.H.P.D. may elect to temporarily or permanently close the park.
- Park will be closed during inclement weather.
- Park sponsored programs have priority.

THE PARK DISTRICT IS NOT RESPONSIBLE FOR ANY LOST OR STOLEN ITEMS.

REFUND POLICY

• Refund requests for any class MUST be made Monday through Friday, 9 a.m. to 5 p.m., and at least 48 hours prior to the program's second meeting. After the program's second meeting, no refund will be issued.

• An administrative fee will be assessed on all credits or refunds. Credits will be charged a \$1 administrative fee, and all refunds by check will be charged a \$5 administrative fee.

Refunds for special events, one day program/events, and trips will be issued only if cancelled by the Park District.

• There will be a 30-day waiting period on all refunds. All refunds will be mailed. **No cash or credit card refund will be given.**

• Refunds/prize money checks not cashed within 180 days will be voided and considered a donation to the park district.

• T-shirts/Uniforms issued in a program cannot be returned/refunded for any reason.

• All deposits are non-refundable except when programs are cancelled by the park district.

• Any refunds totaling \$20 or less will automatically be applied to your household account unless the park district cancelled the program.

• No refunds will be issued if you owe a balance (this includes preschool & dance balances).

• If you paid for a friend or family member and are requesting a refund, the refund will be made out to the participant not the payee.

• Refunds will not be given for medical reasons/doctor notes.

NEW ARRIVAL

Are congratulations in order? The park would like to deliver a very special bib to your newborn son or daughter. To receive the gift, simply call the park district office at 708-598-1233, informing us of your new arrival. We'll send the gift directly to your home!
CONGRATULATIONS!

PARK WATCH

We need your help to keep the parks clean, safe, and free of vandalism. If you find any broken equipment or have any other safety concerns about the facilities, please contact the park district at 708-598-1233. If you see vandalism occurring in the parks, please contact the police department at 708-598-1313. The park district is committed to providing a safe place for recreational activities and would prefer to enhance the quality of the parks rather than replace vandalized equipment. Thank you for your support in our efforts to provide the residents of the park district with quality park sites and facilities.

AMERICANS WITH DISABILITIES ACT (ADA)

Hickory Hills Park District complies with the ADA and will make reasonable accommodations to enable people with disabilities to participate in and enjoy recreation programs. If you have any questions about the park district's compliance, please call us at 708-598-1233. Special accommodations should be made a minimum of 3 weeks before the start date of the program during the registration process.

PARENTS NOTE

Parents are asked not to attend their child's class unless invited by the instructor. Our instructors welcome the opportunity to discuss concerns with parents before or after class, time permitting. We have found that parents and/or siblings distract from the quality of instruction. It is of equal importance that children have quality leisure time with their peers. Thank you for your cooperation.

Due to insurance regulations, children are not allowed in adult classes with parents. The Park District is also not responsible for children left unsupervised while a parent attends a class.

FAMILY MEMBER RATE POLICY

An immediate family member is defined as a husband, wife and/or child(ren) that is 24 years or younger, living in the same household.

GEESE UPDATE

Ducks and geese naturally feed upon aquatic plants, grains, insects and sometimes fish. Problems arise when they are fed unnatural foods. Please do not upset the delicate balance of nature
DO NOT FEED THE GEESE.

PARK GUIDELINES

For your safety and protection, the Hickory Hills Park District Board of Commissioners have established certain rules so that everyone may enjoy the park safely. You are required to comply with the following guidelines: **All animals, with the exception of service animals, are prohibited in the parks.** Violations are subject to a minimum \$250 fine to a maximum of \$20,000 fine. All service animals must be leashed. Parks close according to posted signs.

The following are prohibited:

- Feeding the water fowl
- Alcoholic beverages
- Drones/unmanned air crafts
- Barbecuing
- Driving on the grass or through the parks
- Golfing

Please note that any violations may carry up to a \$250 fine.

THERE IS A LOCKED REGISTRATION DROP-BOX, ACCESSIBLE 24 HOURS A DAY, LOCATED TO THE LEFT OF THE MAIN ENTRANCE OF THE CYNTHIA NEAL ADMINISTRATION & RECREATION CENTER, 8047 W. 91ST PL.

BEHAVIOR/DISCIPLINE POLICY

The Hickory Hills Park District has a formal discipline policy for disruptive behavior during programs/classes. You may obtain a copy from the office. The Hickory Hills Park District reserves the right to dismiss a participant and/or volunteer for disruptive behavior. Participants and volunteers are expected to exhibit appropriate behavior at all times. The following guidelines were developed to make park district programs safe and enjoyable for all participants. Additional rules may be added at the discretion of the park district. Staff, participants and volunteers shall:

- Show respect for each other
- Refrain from using foul language
- Refrain from causing bodily harm to other participants, staff and volunteers
- Show respect for equipment and facilities.

PARK USAGE

Your family is welcome to play in the parks. Groups of 7 or more is considered a league and will need to get an athletic field permit. We do not allow setting up cones or painting lines unless you have a permit. You may see our fields are not used at times. This is due to keeping the grass and ball fields looking good for park district programs and leagues.

- No picnic rentals
- No grilling
- No catered meals
- No pets
- No setting up of tables, chairs, inflatables, etc.
- Firearms are prohibited in any park, playground, and facility.

ATHLETIC FIELD PERMIT

A permit is necessary for any formal or informal use of 7 or more people using our athletic fields. Permits will be issued according to availability beginning March 1, but not confirmed until April 1. For details on athletic fields call 708-598-1233 ext. 0. There are no picnic or park rentals/permits, except for the Krueger Park Picnic Shelter (weekends only).

ROOM RENTALS

Call 708-598-1233 ext. 0 for more information on building rentals.

TYPOGRAPHICAL ERRORS

All typographical and printing errors are subject to correction.

MSDS sheets are available on all products used by the Park District.

DOUG OSBORNE PARK OPENING THIS FALL



Doug Osborne is located at 84th Ct. and Coey Lane, off of 95th Street. The park features include a new playground, swings, benches, a bike rack, shelter, game tables, a rocking horse, a bat house, painted games such as Hopscotch, and an outdoor fitness area. This is an Open Space Lands Acquisition and Development grant awarded by the Illinois Department of Natural Resources.



Strengthening the fabric of our community.

Our friendly bankers offer personal service and local lending solutions. Stop in or call us at 708-598-7400.

Khalid Ghori
Branch Manager

7800 W 95th St, Hickory Hills, IL 60457

708-576-7106

Khalid.Ghori@oldnational.com

oldnational.com

PROUDLY SUPPORTS

**Hickory Hills
Park District**



Member FDIC

2022 **WORLD'S MOST
ETHICAL
COMPANIES**
WWW.ETHISPHERE.COM
11-TIME HONOREE

Hickory Hills Park District
8047 W. 91st Pl.
Hickory Hills, IL 60457

PRSR MKT
US POSTAGE PAID
BRIDGEVIEW, IL 60455
PERMIT NO. 154

ECRWSS
POSTAL CUSTOMER
HICKORY HILLS, IL 60457

Registration Information
Resident Registration Begins Monday, August 19th
Non-Resident Registration Begins Monday, August 26th

Hickory Hills Park District

7TH ANNUAL CARNIVAL!

ALL
SALES ARE
FINAL

Carnival Hours:

Thursday, August 22nd 5 - 10 p.m.

Friday, August 23rd 5 - 11 p.m.

Saturday, August 24th 12 - 11 p.m.

Sunday, August 25th 12 - 10 p.m.

Thursday, August 22nd 3 - 5 p.m. is Special Needs Day
Concessions Available Everyday.

Presale **4-Day MEGA-Pass** wristband is \$63 (\$60 Cash).

On sale, 9 a.m. - 5 p.m. from July 31st to August 21st.

For information, call 708-598-1233 or visit hhparkdistrict.org

Rides are subject to change

